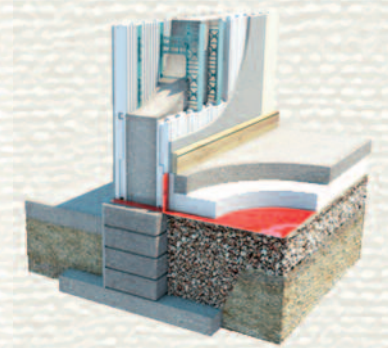


WHAT IS KORE

Kore is an exclusive range of service and products that provide Insulation and Energy Saving Solutions.

The key benefit of KORE is our ability to provide an 'A' energy rating for a building and then manufacture and install an integrated suite of insulation products to help deliver it. KORE offers clients a one stop insulation shop.



KORE Products are available in two grades of material, original white polystyrene and thermally advanced silver Neopor polystyrene. KORE Silver can achieve the same insulating performance as the original white insulation with up to 50% less raw material. Graphite flakes, responsible for reflecting heat radiation gives the product its distinguishable silver colour and superior insulation properties.

Insulated Concrete Formwork is an advanced Modern Method of Construction.

Insulated Concrete Formwork uses expanded polystyrene panels to form multi-storey wall structures, of various widths, for use in all sectors of the construction industry; residential, commercial, industrial and institutional.

Once the panels are laid they form a rectangular space into which concrete is poured. The concrete ensures the structural strength of the wall while the KORE panels remain permanently in place as thermal insulation for the life of the building.

Typical applications include footings, retaining walls, basements, external walls, internal walls, load bearing walls.

THE KORE PRODUCT RANGE IS APPROVED FOR USE BY THE SEI FOR THE HOME ENERGY SAVING SCHEME.

U-VALUE

BUILDING REGULATIONS: $0.27\text{W/m}^2\text{K}$

KORE ADVANTAGE

Superior Thermal Performance
No Thermal Bridging at Junctions
Complete Airtight Building
Durable Concrete Construction
Specialist Installers
Irish Agreement Approved


KORE

WHO WE ARE

We are based near Roscrea on the Offaly/Tipperary border perfectly placed to provide a nationwide building service.

We supply very high energy efficient buildings. To date we have completed well over 100 projects achieving U- values well in excess of current Building Regulations.

We provide a fast and efficient service from pricing to project completion. See our services page for services provided.

We are one of Irelands most experienced I.C.F. Specialists, being amongst the first to install I.C.F. wall systems in this country. We are fully trained and certified in a range of I.C.F systems.

We have completed projects from small house extensions and new dwelling houses to apartment blocks and Nursing Homes etc.



ICF Buildings are:

Water Proof, Damp Proof, Storm Proof, and
Sound Proof

ICF buildings have

Superior UValue, Airtightness,
Superior Thermal Mass and Faster Build Times.

ICF buildings have an un-beatable combination for energy conservation and sustainability.

“CONCRETE BUILT IS BETTER BUILT”

“INSULATED CONCRETE IS BEST.”

SERVICES

KORE

- Complete builds using I.C.F. (Insulated Concrete Formwork).
- New Builds, Extensions, Renovations, Commercial, Industrial and Retail Buildings
- Direct Labour Quotation on request
- Supply and Installation or installation only of ICF Wall Systems
- Advice on heating systems (Geo-thermal/Air to Water heat pumps, Heat Recovery Ventilation Systems etc.
- Building Energy Rating (BER) carried out on request
- Range of exterior acrylic renders and internal finishes including Internal spray plaster supplied and installed by Michael Cleare Plastering.
- SEI approved for Home Energy Scheme (HES), Insulation Grants – Dry lining, Attic Insulation etc.
- Acrylic Rendering

WHERE WE ARE

We are located on just outside Roscrea, Co Tipperary. Please view the map below to locate us*.

Liam Cleare ICF Construction,

087 - 7510354

info@icf.ie

Summerhill, Roscrea, Co Tipperary.



KORE

www.icf.ie



icf **CONSTRUCTION**
INSULATED CONCRETE FORMWORK
SEI APPROVED & CERTIFIED ICF INSTALLER

KORE

www.icf.ie